

Introduction

► Feature

- Line lifting: 362 kg / 800 lb wire rope first layer
- Wire rope: 4.0 mm × 18.3 m galvanized aircraft A7 × 19
- Brake: Mechanical spring applied and permanent motor dynamic brakes together
- Control: Handheld pendant switch

► Unpacking

- Hoist assembly..... 1 pc
- Control box..... 1 pc
- Remote control..... 1 pc
- Wire rope with hook..... 1 pc

► Read this manual carefully

Carefully read and understand this manual before operating the winch.

Careless winch operation may result in personal injury, danger to others and or damage to property

► Information requesting or parts ordering

Please specify the following information:

- Hoist PN
- Serial number
- Quantity for each part
- Part description
- Replacement part number

Installation

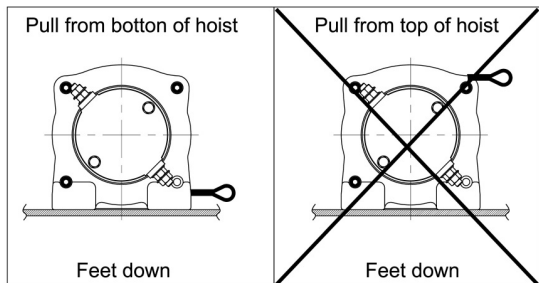
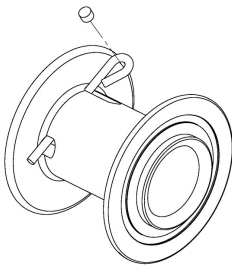
Before using the winch ensure all electrical components are in good condition and all connections are sound.

► Hoist mounting

- Four (4) M8 x 25L 8.8 grade with 22 N-m torque settings (maximum) high tensile steel bolts must be used in order to sustain the loads imposed on the winch mounting

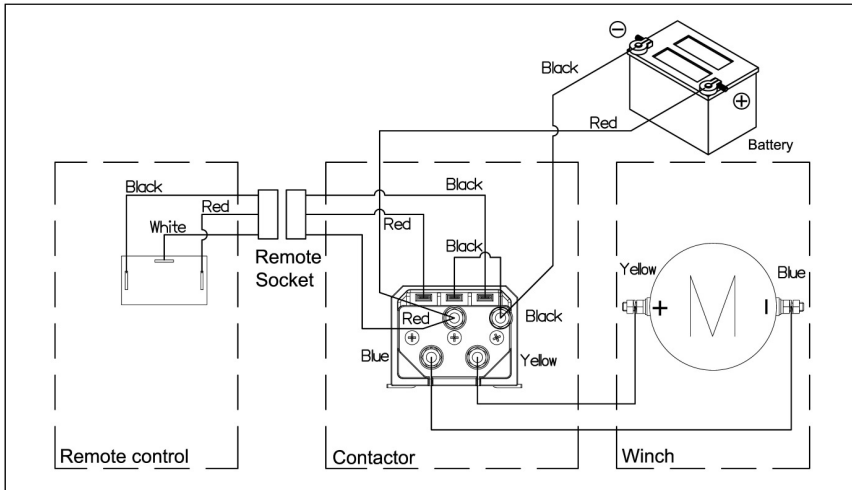
► Wire Rope Replacement

- Feed the end of the wire rope through the anchor hole in the drum and make a loop in the anchor pocket. Insert a wedge in the loop and tighten the rope for securing purpose.
- Make sure the first layer of wire rope is tight and maintain a freeboard at least 1.5 x rope diameter.
- Wire rope shall be wound in an under-wound orientation only.



► Wiring Diagram

Attach the black lead firmly to the negative (-) battery terminal and red lead to the positive (+) battery terminal. The voltage drop for the winch motor must not exceed 10% of the nominal voltage of 12V/24vdc.



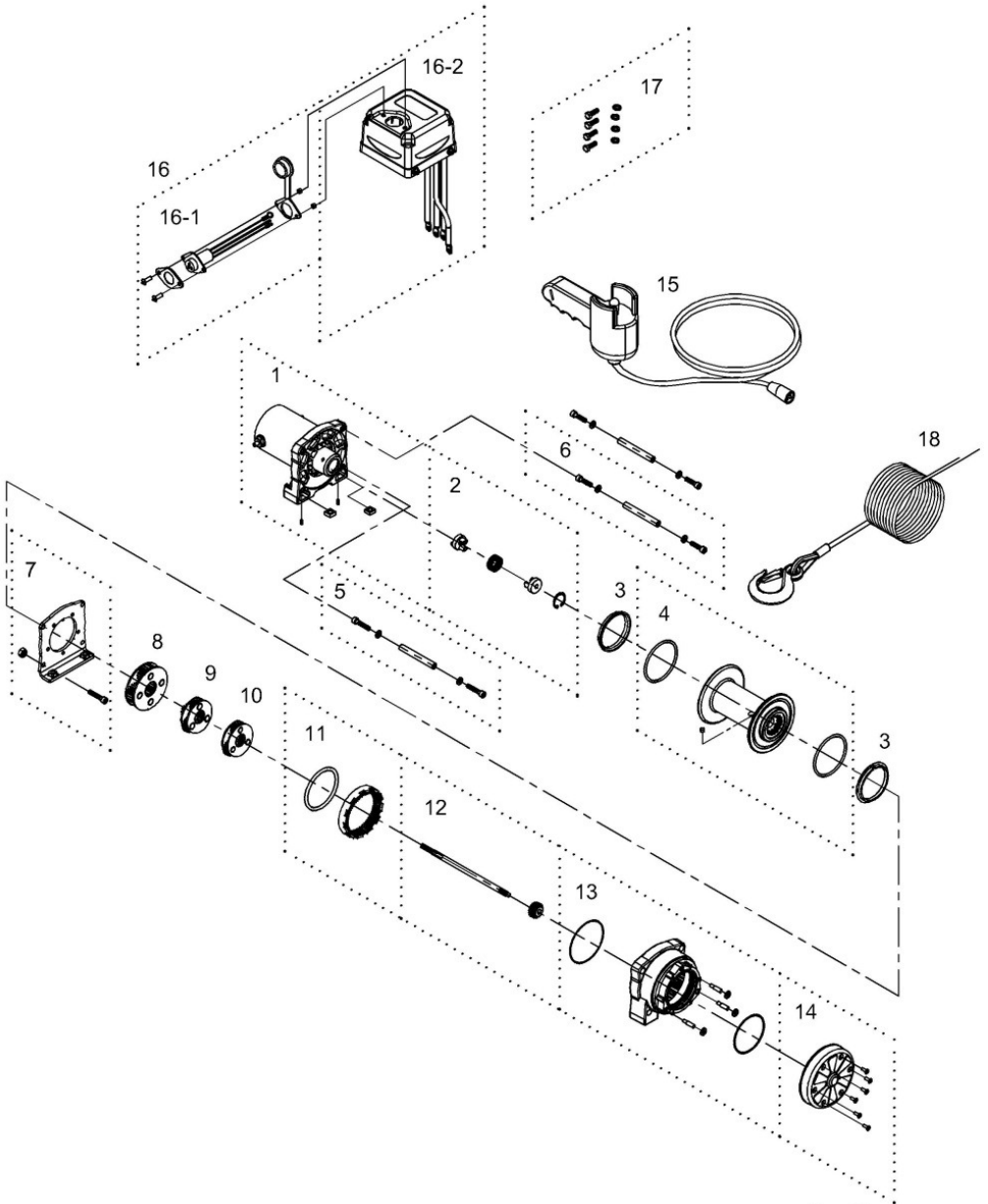
Warning

- The operator shall always work in compliance with the operating instructions.
- Do not Overload the winch. Overload protection should be provided.
- Not for the Transporting or lifting of personnel.
- Excessive inching should be avoided
- Don't try to move obstructed loads and side-pull of load is not allowed
- A minimum of 5 complete wraps of rope on the drum is required at all times

Parts List

Item No.	Description	Part No.	Qty
1	Motor 12V	882417	1
	Motor 24V	882288	
2	Motor couple kit	880988	1
3	Drum bushing	880990	2
4	Drum kit	882319	1
5	Tie bar kit	881007	1
6	Tie bar kit	881008	2
7	Gearbox support rack	880994	1
8	3 rd stage carrier	880995	1
9	2 nd stage carrier	880996	1
10	1 st stage carrier	881009	1
11	2 nd ring gear kit	880998	1
12	1 st shaft kit	881010	1
13	Gearbox kit	882418	1
14	Gearbox rear cover kit	882320	1
15	Remote control	880025	1
16	Control box 12V	882313	1
	Control box 24V	882314	
16-1	Remote socket kit	880029	1
16-2	Control pack 12V	882315	1
	Control pack 24V	882316	
17	Mounting hardware	882545	1
18	Wire rope w/hook	882321	1

Hoist Assembly (GTD800)



Ver:03